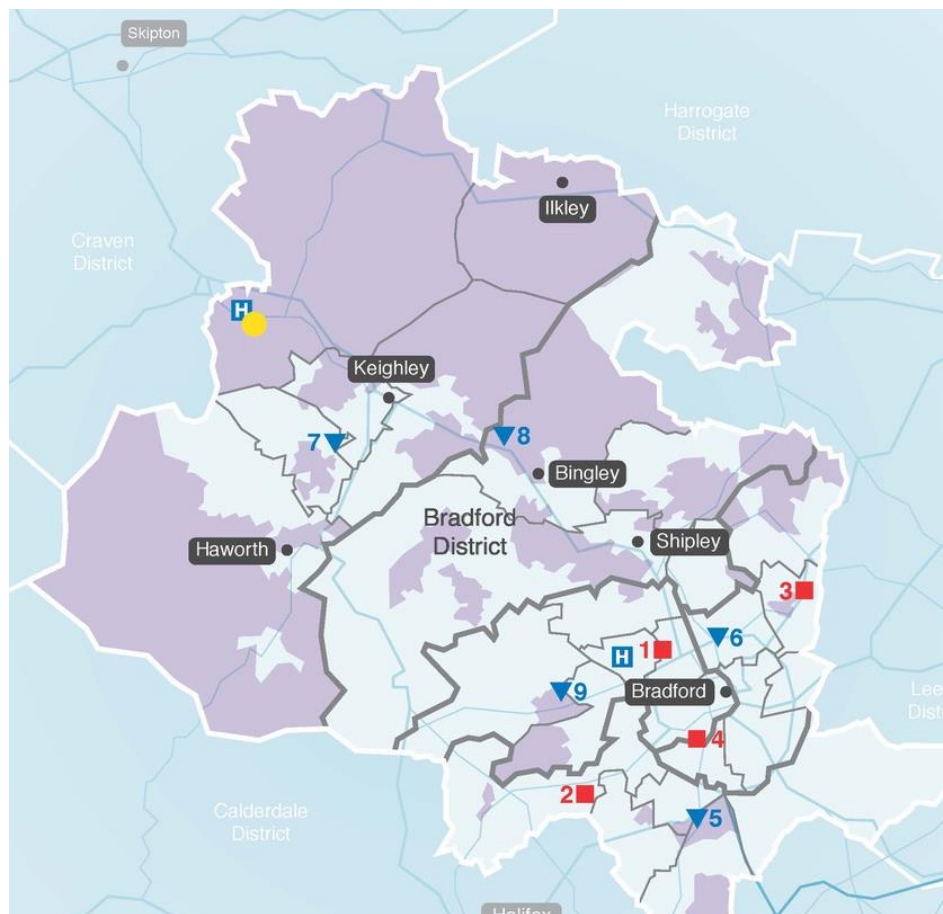


# A sense of place



- We serve over 600,000 people (including Craven)
- Two local authorities, three CCGs, three Foundation Trusts, a vibrant community sector with one VCS Assembly, GP alliances/at scale models, and independent care sector – all part of one Health and Care Partnership (ICS)

*Happy Healthy & at Home*

# Happy Healthy at Home – our vision

---

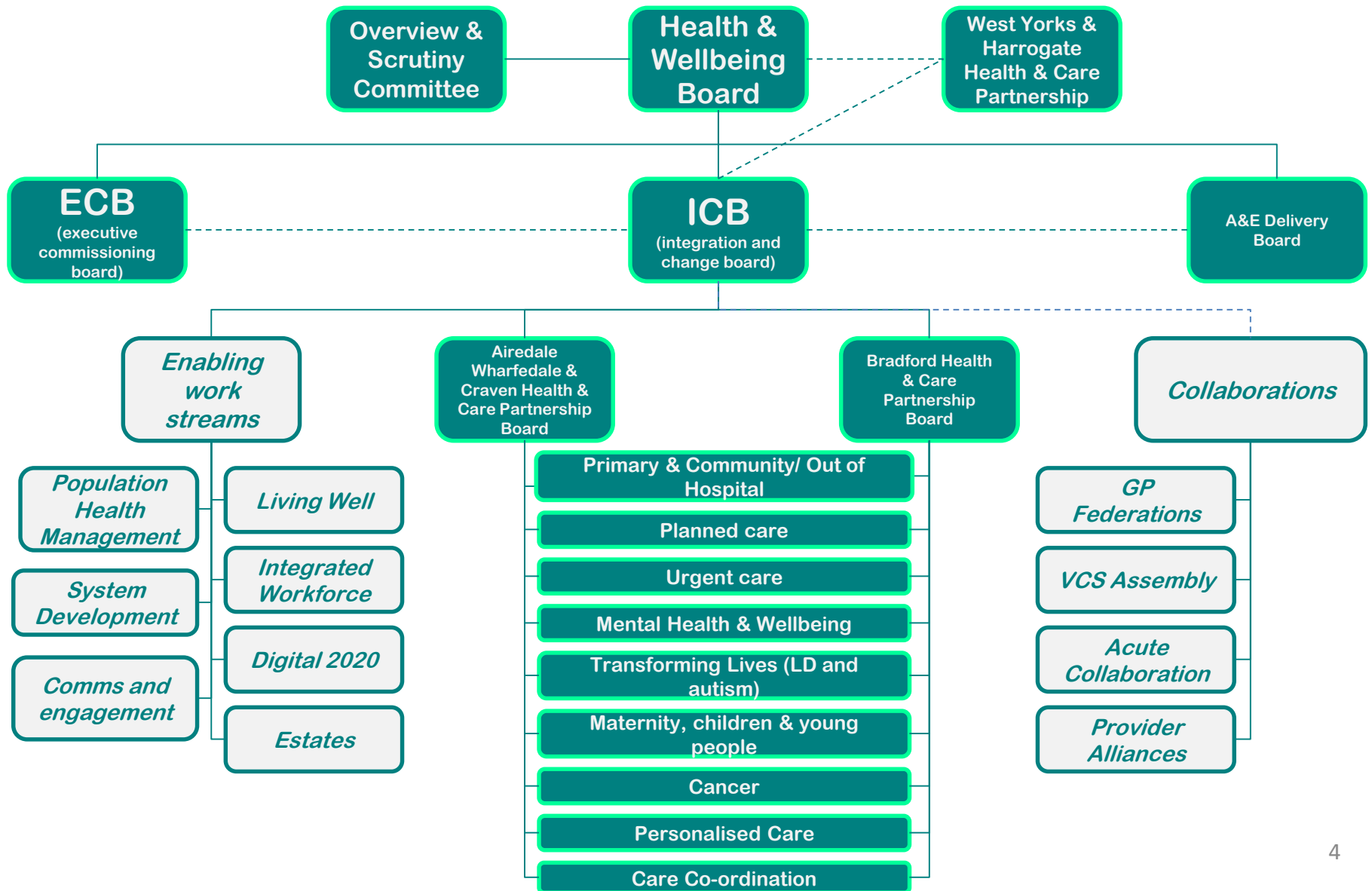
- Every neighbourhood will be a healthy place - will draw together existing good work – will be led by people with enabling support of organisations
- Services will be planned and delivered based on the needs of neighbourhoods and communities
- Everyone with long term conditions will have support to self care
- Everyone with multiple needs will have a team that works together with them and their family / carers.
- Local hospitals will be networked with each other and with services in communities

# Values and Behaviours

---

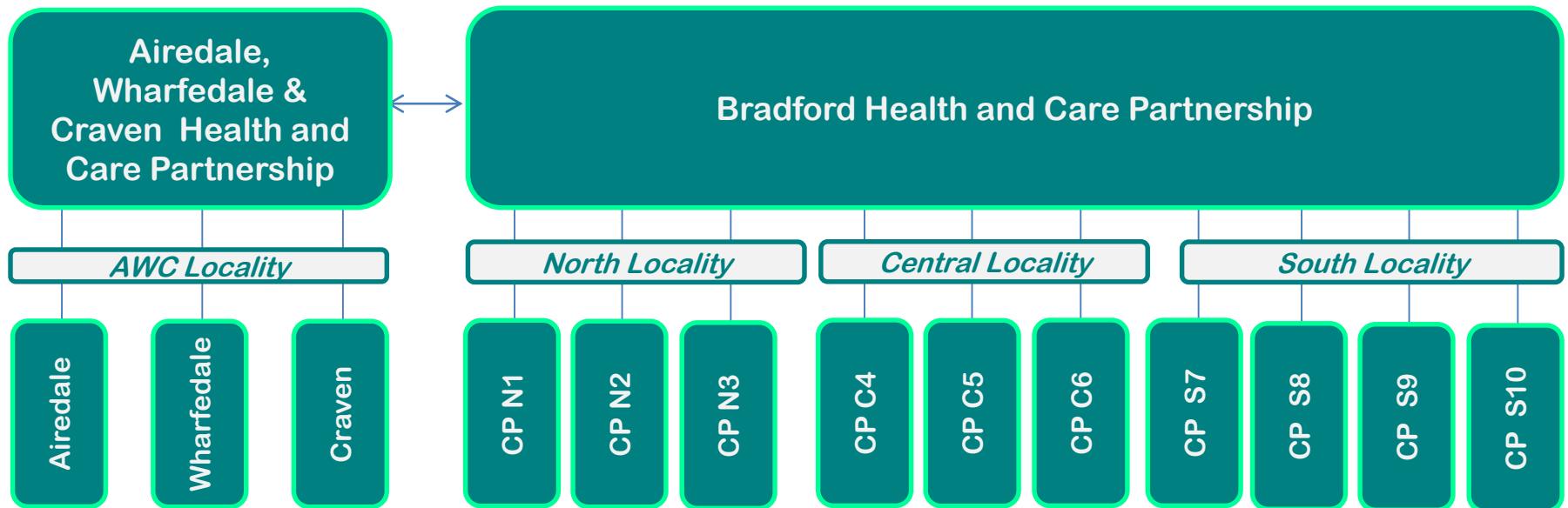
- **We commit to behave consistently as leaders and colleagues in ways which model and promote our shared values:**
- We are leaders of and within our organisation, our health and care partnership and our place (Bradford District and Craven)
- We support each other and work collaboratively
- We act with honesty and integrity, and trust each other to do the same
- We challenge constructively when we need to
- We assume good intentions
- We will implement our shared priorities and decisions, holding each other mutually accountable for delivery

# Bradford District & Craven Health & Care System



# Delivery Arrangements

- We deliver services through 2 local health & care partnerships which comprise 4 localities and 13 community partnerships (people, VCS, GPs, social care providers, community services, intermediate care), four hospitals (AGH, BRI, SLH, LMH), independent and other health and care sector providers (e.g. YAS, LCD, independent hospitals and care home / domiciliary providers)



**Health & Wellbeing Board(s)**

System oversight of strategy on improving health and wellbeing, reducing inequalities and promoting integration

**Community Partnerships**

Integrated delivery, ABCD, innovation and learning

**Health & Care Partnerships**

Operationalise strategy, refine resource allocation. Joint accountability for KPIs

**ICB / ECB**

System leadership, strategy development and resource allocation

